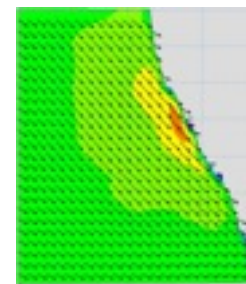


MET-OCEAN COASTAL STUDIES

Met-Ocean Data Processing & Analysis

- Wind, Waves, Tides & Currents
- Water Quality Parameters



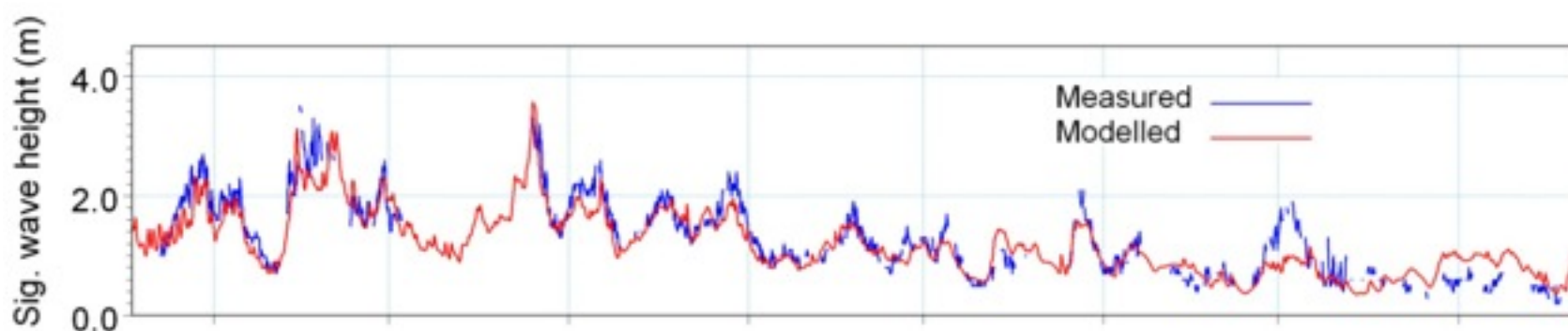
Measurements of met-ocean data such as wind, wave, tides, currents and water quality parameters are essential in understanding their characteristics and to carry out environmental impact assessment.

Numerical Modelling

- Wind-Waves
- Coastal Hydrodynamics
- Water Quality
- Sediment / Mud Transport
- Beach Stability
- Wave Disturbance in Harbours

Application

- Port & Harbour Development
- Dredging & Land Reclamation Projects
- Impact Studies of Desalination Plants
- Thermal Plume Dispersion from Industrial Discharge
- Environmental Impact Assessment of O&G Activities
- Design Basis for Nearshore & Offshore Structures
- Estimation of Return Periods for Offshore Facilities



WATER QUALITY MONITORING PROGRAMMES

Integrated projects are carried out involving the combined expertise of meteorological, physical oceanographers and ocean engineers. Our skilled offshore staff have many years of experience and together with their sense of safety at sea, the data collection is made simple and reliable.



- Execution of field monitoring program.
- Deployment of oceanographic instruments.
- Data acquisition, data processing, modelling and cleansing of data.
- Supplying qualitative and quantitative data to clients.
- Project Based Marine Logistics. Floats & Vessels
- Insurance for Underwater & Marine Assets

BAYPORE PRIVATE LIMITED



WWW.BAYPORE.COM

(Met-Ocean Department)
 Phone: +65 9338 6490 Email: survey@baypore.com
 No.1 Soon Leet Street
 #04-41 Pioneer Centre, Singapore 627605